

## FACILITIES & AFFILIATES

### Weequahic Park GC

**Location:** Newark, NJ

**Phone:** (973) 926-9625

**Email:** [Essexinfo@thefirstteemetny.org](mailto:Essexinfo@thefirstteemetny.org)

**Course Stats:** 18 Holes.

**Programming:** Individual and group sign ups.

- Hendricks Field GC
- Francis Byrne GC

### Plainfield West Nine

**Location:** Plainfield, NJ

**Phone:** (908) 757-1800

**Course Stats:** 9-hole course & learning facility.

**Programming:** Individual sign ups. Spring, Summer, and Fall classes.

### The Golf Club at Chelsea Piers

**Location:** Manhattan, NY

**Phone:** (718) 655-9164, Ext. 107

**Course Stats:** 4 tier driving range, indoor putting/chipping green and simulators.

**Programming:** Fall/Winter only, runs in conjunction with school year. Group and individual sign ups.

### Brooklyn Golf Center

**Location:** Brooklyn, NY

**Phone:** (718) 253-6816

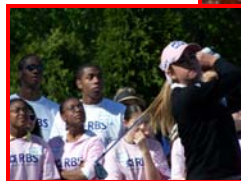
**Course Stats:** 75 hitting stalls. Grass, heated, & covered tees available. Practice putting and chipping area.

**Programming:** Individual and group sign ups. Spring, Summer, and Fall classes.



RESPECT

COURTESY



INTEGRITY

SPORTSMANSHIP



CONFIDENCE

PERSEVERANCE



JUDGMENT

RESPONSIBILITY



**Chapter Headquarters are located at:**

**The First Tee Metropolitan New York  
Mosholu Golf Course  
3545 Jerome Avenue  
Bronx, NY 10467  
Phone: 718-655-9164  
Fax: 718-655-9174**

[www.TheFirstTeeMetNY.org](http://www.TheFirstTeeMetNY.org)

H  
O  
N  
E  
S  
T  
Y



LEARN



P  
L  
A  
Y



GROW



[www.TheFirstTeeMetNY.org](http://www.TheFirstTeeMetNY.org)

## MISSION STATEMENT & PURPOSE

To impact the lives of young people by providing learning facilities and educational programs that promote character development and life-enhancing values through the game of golf.

As a partnership between the MGA Foundation and Metropolitan PGA, The First Tee Metropolitan New York serves as the premier golf youth development organization in the Metropolitan New York region.

*“Golf is a fun game. I can learn and have fun at the same time. I like golf better than any other game I’ve played.”*

*-Jasmin B.*

## LIFE SKILLS EXPERIENCE

The First Tee Life Skills Experience is one of the unique features that differentiates The First Tee from many other successful junior golf programs.

These lessons for life are taught through a variety of golf-related activities designed with the primary goal of having fun. Participants learn about themselves and others through a range of experiences enhancing their golf skills as well as their fundamental values for life.

There are a total of 5 levels of progression within the Life Skills curriculum. In order to progress from level to level there is a certification process that tests both the participant’s aptitude in golf skills and life skills.



## LIFE SKILL LEVELS

### TARGET

Target is the most basic Life Skill (LS) level and introduces beginners to the game of golf. All new groups begin at Target. There is no certification process to advance from Target to Par, and no prior golf experience is necessary.

### PLAYER

PLAYer introduces how to play the game of golf with special emphasis on learning golf and The First Tee Code of Conduct, appreciating the rules and etiquette of the game, and developing your game in golf and life.

### PAR

All Par students must be PLAYer certified. No prior golf experience is necessary. Students work on their swing, grip, and stance as well as learn how to introduce themselves, the meaning of respect, and finding their “personal par”. Certification in Par is required to advance to Birdie.

### BIRDIE

All Birdie students must be Par certified. Birdie focuses on goal setting and how to go about achieving both long term and short term goals. Golf skills include: course management, etiquette, and advanced swing/putting skills. Certification in Birdie is required to advance to Eagle.

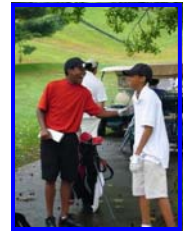
### EAGLE

All Eagle students must be Birdie certified. Eagle focuses on wellness and health for the mind and body as well as conflict resolution, diversity, and explores careers in the golf industry. Golf skills include: playing competitively, effective practice strategies, how to self-correct, and accuracy.

### ACE

All Ace participants must be Eagle certified. Ace focuses on personal planning, reinforces interpersonal communication, self-management, goal-setting, self-coaching, and resistance skills. Ace encourages volunteerism and the pursuit of higher education. All while providing the student the support structure to flourish and excel in their lives after high school not only in golf but academically and socially as well.

## FACILITIES & AFFILIATES



### Mosholu GC

**Location:** Bronx, NY

Phone: (718) 655-9164, Ext. 107

Email: [Programs@thefirstteemetny.org](mailto:Programs@thefirstteemetny.org)

Course Stats: 9-holes, driving range, practice putting and chipping greens.

Programming: Individual and group sign ups. Spring, Summer, and Fall classes.

- Harlem Golf Academy

### Eisenhower Park GC

**Location:** Long Island, NY

Phone: (516) 222-2620

Email: [abc123golf@aol.com](mailto:abc123golf@aol.com)

Course Stats: 54 holes, driving range, practice putting and chipping greens.

Programming: Individual and group sign ups. Spring, Summer, and Fall classes.

- Bay Park GC
- Christopher Morley Park GC
- Cantiague Park GC
- North Woodmere GC

### Fairchild Wheeler GC

**Location:** Bridgeport, CT

Phone: (203) 374-7779

Fax: (203) 373-9914

Course Stats: 36 holes, driving range, and practice putting and chipping greens.

Programming: Individual and group sign ups. Spring, Summer, and Fall classes.

- Oakhill GC
- Silvermine GC
- Stratford Par Three

